

Safety e-Base Pro

Increase the productivity, efficiency and traceability of your production line testing with Safety e-Base Pro software from Clare.

Used in conjunction with a HAL safety tester, Safety e-Base Pro delivers supreme productivity, enabling totally customisable test sequences to be set up and operated via a PC from any safe, convenient location, even away from the production line if required.

An intuitive user-interface is taken a step further with the ability to provide user prompts in text or picture format – operators can be guided step-by-step on what to do next, saving time and reducing the risk of human error.

Total traceability and auditability of results is made possible through virtually unlimited storage, with results being stored on a PC or network drive.

Safety e-Base Pro is the indispensable companion to the HAL series of production line testers*. This software program can remotely drive any of the HAL series testers* from a PC; enabling test sequence data to be held either locally on a PC, or on a centrally located network drive, depending on your storage or audit requirements. Safety e-Base Pro has two modes of operation: Engineer Mode for setting up test sequences and settings; and Operator Mode for performing the tests.



Work Smarter

- Totally customisable to your requirements
- Improved traceability of results
- Simplifies the testing process and improves safety for the operator (i.e. reduces human error, time saving, assurance of quality/reliability, futureproof)

Key Features

- Intuitive user-interface
- Full Remote Control of HAL safety testers*
- View live test data streamed from the HAL including analogue control inputs
- Separate engineer and operator modes
- Restart tests from point of failure
- Custom operator prompts/alerts
- Control over analogue inputs: naming, scaling and setting units
- XML file format and Safety e-Base Results Viewer tool
- Export to CSV format (for spreadsheet applications)
- Print function for Desk Test n Tag printer
- Print file function for third party applications
- Compatible with a barcode scanner
- Multi-language capability

*Safety e-Base Pro is not available for use with the HAL 102 safety tester

Technical Specifications

Supported Systems

- Windows XP 32-bit
- Windows XP 64-bit
- Windows 7 32-bit
- Windows 7 64-bit

Recommended Minimum System Requirements

- 1GHz Processor
- 256MB RAM
- 100MB Hard Disc Storage

Download a free trial from www.clare.co.uk/safety-e-base

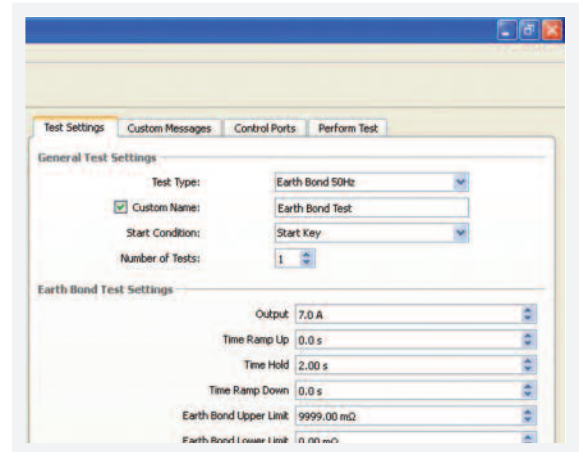
Safety e-Base Pro Part No: 482A910

► Engineer Mode

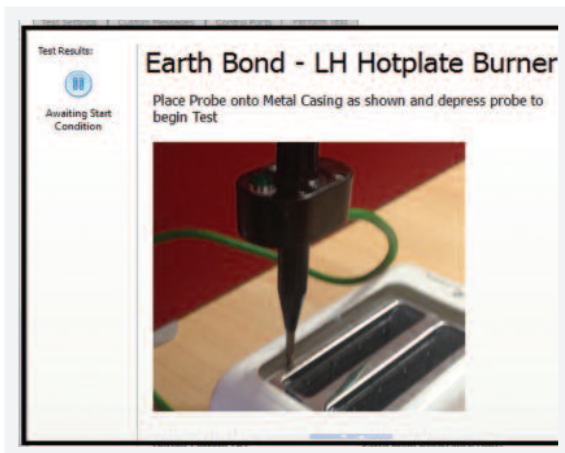
The intuitive user interface within Engineer Mode means creating test sequences is a very simple process. The engineer may specify any number of tests, in any order, according to the standard being worked to, and the specification needed - providing a bespoke and reconfigurable solution for any product under test.

When used in conjunction with the HAL testers*, Safety e-Base Pro offers greater command over its control ports, allowing the eight analogue inputs to be displayed 'live' in the user interface while tests are performed.

Furthermore, each of the eight inputs may be named and given a custom scaling and unit of measurement to allow input from external equipment to be displayed and stored in a more useful form. It is also possible to allow test results to be recorded against the custom inputs specified, further improving traceability of results.



*Safety e-Base Pro is not available for use with the HAL 102 safety tester



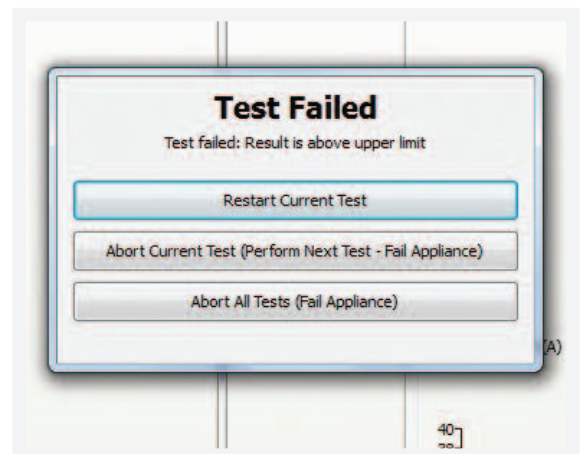
► Operator Mode

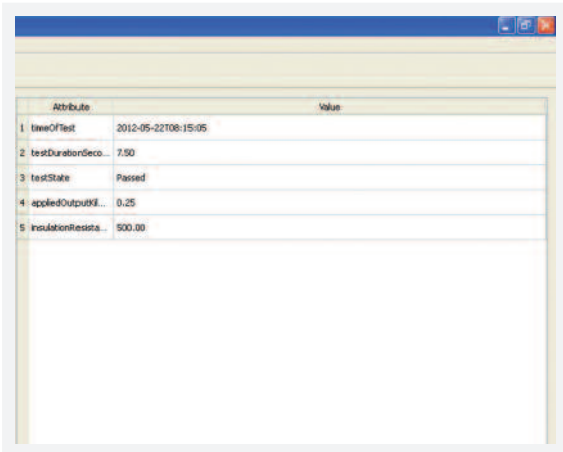
In Operator Mode, the user is provided a clean and intuitive user interface, eliminating the need for extensive operator training. Custom text or pictorial operator prompts can be shown at every step of the test sequence, making the operator process simple and reducing the room for human error. For example, the operator may be shown an image displaying where to connect a probe to the appliance, or given text detailing the procedures to be followed should an appliance fail a test.

Safety is intrinsic to Safety e-Base Pro's design. It enables the abortion of individual tests or entire test sequences either from the Safety e-Base Pro user interface on the PC, or from the HAL tester itself.

► Re-test Feature

The retest feature increases efficiency further. Unintended failures, for example caused by the misplacement of the test probe, can now be retested from the point of failure without the need to fail the whole sequence and retest the entire product.





Attribute	Value
1 timeOfTest	2012-05-22T08:15:05
2 testDurationSecs	7.50
3 testState	Passed
4 appliedOutputV...	0.25
5 insulationResets	500.00

► Test Results Storage

Test results are saved in XML file format and can be easily transformed or imported into other data formats. The engineer is able to specify exactly where and under what name the results files are created. It is possible to include the time and date of test, appliance serial number and name of operator within the filename.

For easy viewing of the test results, Safety e-Base Results Viewer is included with Safety e-Base Pro. It provides basic search facilities and enables the XML results data to be exported into CSV format for manipulation in a spreadsheet application such as Microsoft Excel.

► Label Printing

Test status labels can be printed on completion of a test sequence. Labels can be configured to print under certain conditions, for example, only on a PASS condition. Multiple labels can also be configured to print.

For those who prefer to use third party printing applications, such as BarTender, Safety e-Base can be configured to output a print file to a chosen destination, with user configurable information in XML format. This file can then be interrogated by the application in order for custom labels to be printed.

