

# How to Clone a Clare Test Instrument

The Tester Configuration program allows the user to clone a Clare Test Instrument either for back up of configuration data or to replicate settings across multiple instruments. A back up of data will consist of system configurations and created test sequences.

## Equipment Required

PC with RS232 Port

Test Instrument

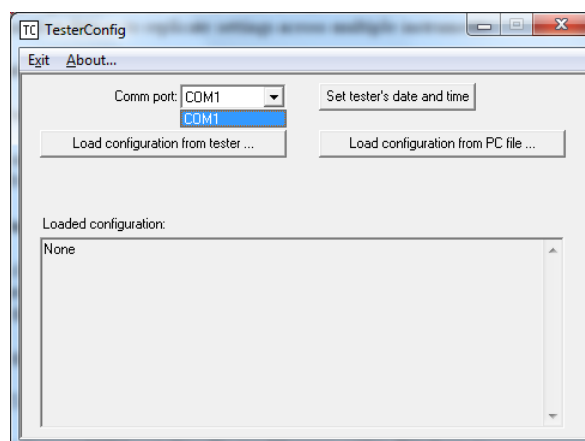
Download Cable supplied with Instrument

Tester Configuration Software – <http://www.seaward.co.uk/HALConfig>

## Method – Creating Clone File

Before creating a clone file ensure the Test Instrument to be used is configured to working requirements, ie ensure it is set up and test sequences required are programmed into the device

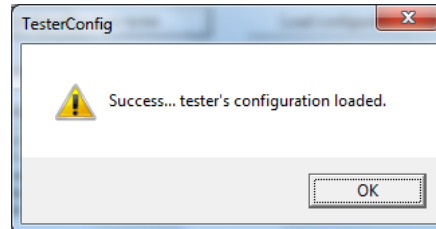
- 1) Connect the Test Instrument to a PC using the Download Cable.
- 2) Run the Tester Configuration software
- 3) Select the Correct COM port (Use Device Manager within Windows to determine correct port, but if connected directly to an RS-232 port on the PC this is usually designated as COM1)



- 4) Press the Button labelled “Load Configuration from Tester...” a box will pop up with further instructions;
- 5) From the Main Menu of the HAL, scroll to REMOTE MODE and press the Green Button

## Application Note 075

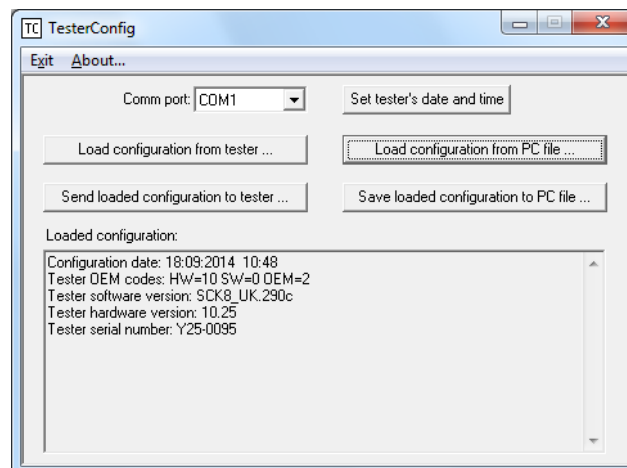
- 6) Return to the Tester Configuration software and press the OK button
- 7) The software will capture the information from the Tester and a confirmation pop up will be shown



- 8) Press the OK button and then click the “Save Loaded Configuration to PC File...”, a prompt will appear to save the created back up file, choose a destination and filename then press the Open Key to create and store the back up.

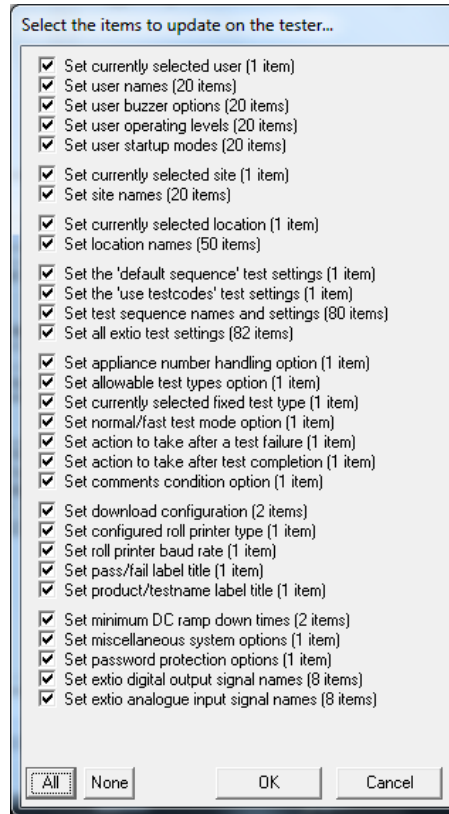
**Method – Loading Clone File to HAL**

- 1) Connect the Test Instrument to a PC using the Download Cable.
- 2) Run the Tester Configuration software
- 3) Select the Correct COM port (Use Device Manager within Windows to determine correct port, but if connected directly to an RS-232 port on the PC this is usually designated as COM1)
- 4) Press the Button labelled “Load Configuration from PC File” a box will pop up with a prompt to find the saved configuration file. Select the file and press the open button. The Configuration software will display information relating to the file to be loaded



- 5) Press the Button labelled “Send loaded configuration to Tester...” a box will pop up allowing a choice of what configuration information shall be transferred. Either individually choose or select all to send all the data, then Press OK, instructions for the next steps will be displayed.

## Application Note 075



- 6) From the Main Menu of the HAL, scroll REMOTE MODE and press the Green Button
- 7) Return to the Tester Configuration software and press the OK button
- 8) The software will send the information from the Tester and a confirmation pop up will be shown once complete.