

How to Update Firmware in the HAL Series

This Application note is designed to provide a guide to updating the Firmware in the HAL Series of testers

Note: It is recommended that prior to performing any firmware upgrade that the HAL system is backed up (See [Application note 075](#)) and any stored test results downloaded (See [Application note 032](#)). Please note that the clone tool and results download utility are already included in with HAL firmware download files.

In addition, before updating, make a note of your existing firmware version number eg. CLAREH.200H. This is shown at the bottom of the screen at startup or by pressing and holding second function key whilst booting.

Required Items

PC with built-in RS232 Port

HAL Test Instrument

Download Cable supplied with Instrument

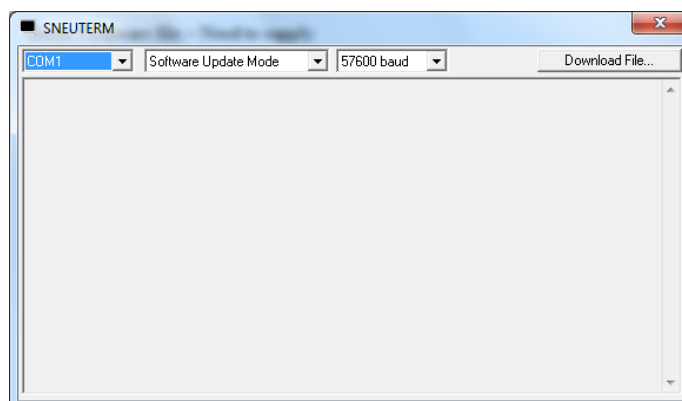
Tester Update Software and Firmware File– <http://www.seaward.co.uk/HALFirmware>

Note: - For HAL LED please use CLAREH.200j.txt

For all other HAL variants please use CLAREH.15j.txt

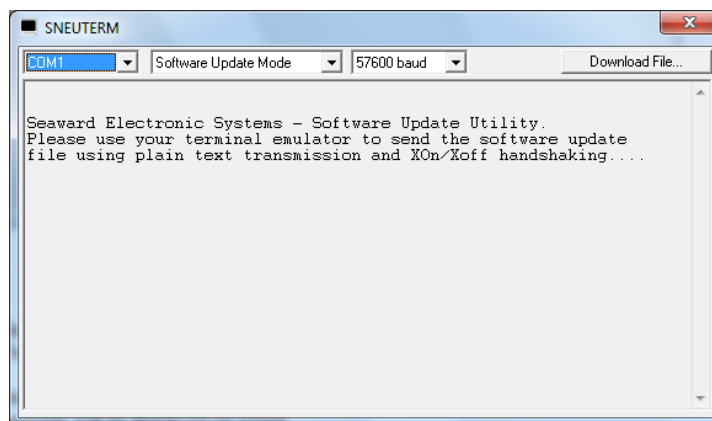
Method – Updating the Firmware

- 1) Connect the Test Instrument to a PC using the supplied Download Cable, do not power on the HAL at this stage
- 2) Run the Tester Update software, the following screen will be displayed



Application Note 074

- 3) Select the Correct COM port (Use Device Manager within Windows to determine correct port, but if connected directly to an RS-232 port on the PC this is usually designated as COM1)
- 4) Select Software Update Mode from the dropdown list
- 5) Select Baud Rate 57600
- 6) With the HAL switched off, press and hold the Green Button and the far right Function key whilst pressing the Power button on the HAL. This will initiate a connection between the HAL and PC and the following message will be displayed
- 7) With successful communication between tester and computer, the following message will be displayed on screen
- 8)



- 9) Press the Download button, a secondary box will open to find and select the Tester Update File. Choose the required file and press Open, the firmware update procedure will begin.

Note: - For HAL LED please use file CLAREH.200i.txt
 For all other HAL variants please use CLAREH.15i.txt

- 10) The Tester Update program will display an ongoing countdown as the file is loaded, upon completion the software will display a successful notice and the new firmware is applied to the HAL. (Shown below)

